

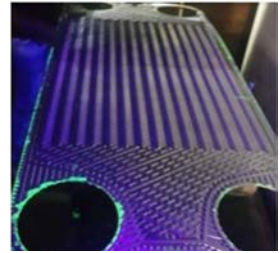
# OPTIMIZE YOUR PLATE HEAT EXCHANGER

**ANEKA ENGINEERING**

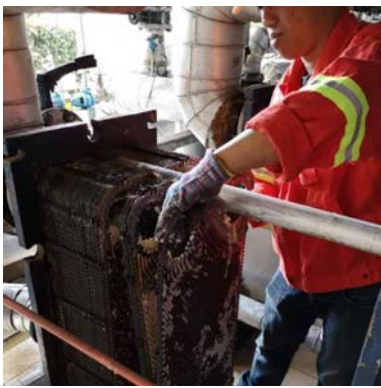
Just like car, a plate heat exchanger (PHE) needs regular maintenance to keep running at peak performance. This is due to plate fouling. As matters builds up in the groove of the plates, the heat transfer capacity of the plates diminished; hence reduce the efficiency of the PHE. It is important to catch the issue early to avoid extended downtime and excessive maintenance cost.

In Aneka Engineering, we provide total solution for your PHE problems:-

- Performance check
- Troubleshooting
- Plate cleaning (chemical soaking and hydro-blasting)
- Re-gasketing
- Hydro-test and dye-penetrant test for cracks and pin holes



## DISMANTLE PHE & ACCESS PLATE PACK



## REMOVAL OF OLD GASKET



## PLATE CLEANING



## PLATE INSPECTION



## DYE PENETRANT TEST



## INSTALL NEW GASKET



## RE-INSTALL PLATE PACK



## TIGHTENING PHE



## LEAK TEST

